

**Brand U / I**

**Complete Blanket Sample**

**General Data**

Brand: Acoma  
 Model: Uno  
 Structure: 3 plies  
 Colour: Blue  
 Application: Sheefed, HeatSet & ColdSet  
 Ink Compatibility: Conv. & Hybrid  
 Width X Length: 50 X 50 mm  
 Thickness: 1,94 mm  
 Hardness: 74° Shore A  
 µHardness: 61,0° IRHD  
 Density: 1,00 g/cm<sup>3</sup>  
 Roughness Ra: 1,0 µm (estimated)  
 Sample #: WR349  
 Batch #: AP0486e  
 Received @: 09/09/2016

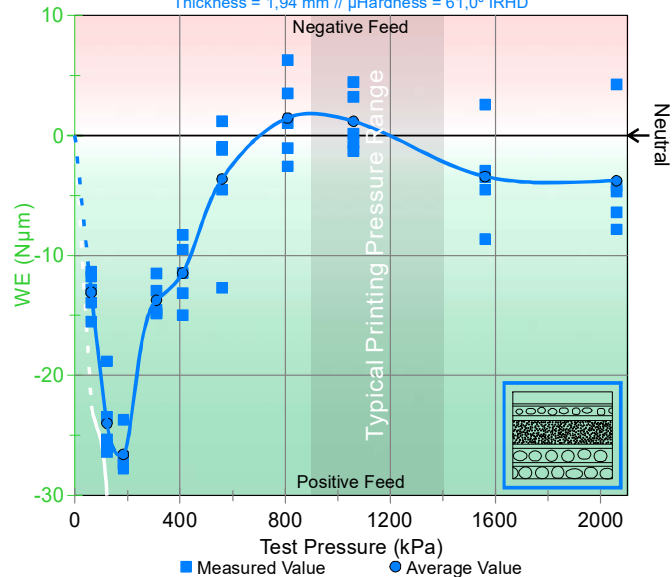
**Whip Reaction Test**

Test	WhipPeak	WhipTime	WhipEnergy
Pressure kPa	Average (Wp5)	Average Nmm (WT) s	Average (WE) Nµm
62*	-0,034	2,19	-13,1
122,5	-0,070	2,26	-24,0
185	-0,107	3,30	-26,6
310	-0,195	2,17	-13,7
410	-0,288	2,00	-11,5
560	-0,373	1,86	-3,6
810	-0,551	1,51	1,5
1.060	-0,790	1,63	1,2
1.560	-1,276	1,96	-3,4
2.060	-1,830	2,15	-3,7

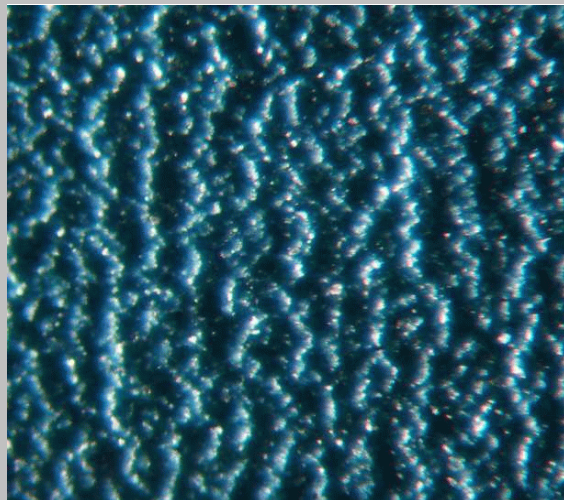
\*Pre-load: 20 kPa

**Complete Blanket Sample**

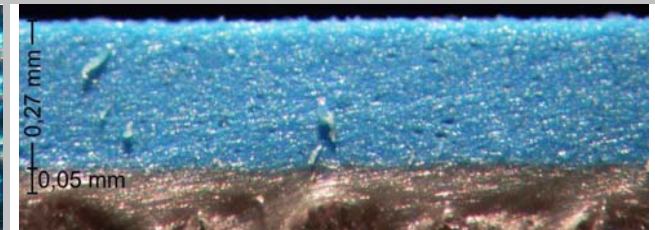
Thickness = 1,94 mm // µHardness = 61,0° IRHD



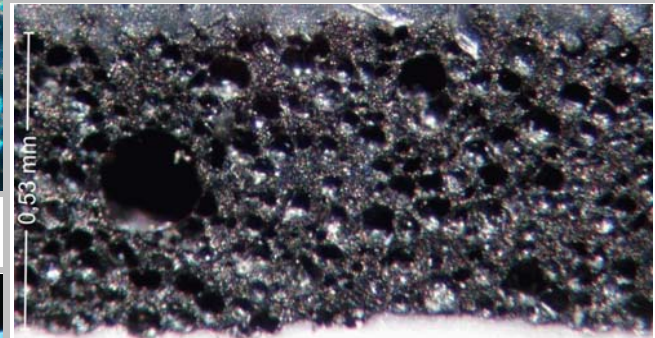
**Surface Rubber Texture - 1,0 x 1,2 mm**  
 Magnification: 120 X



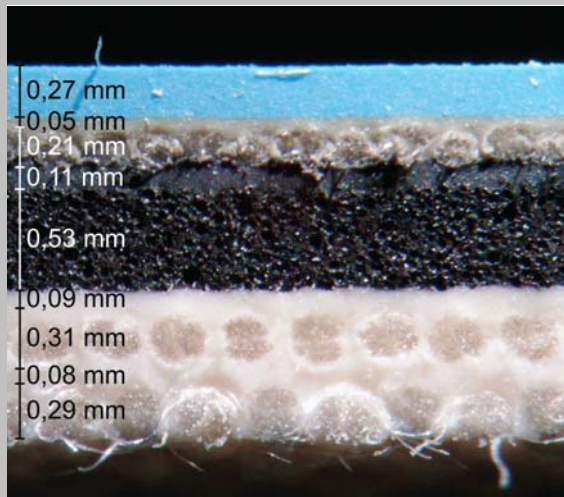
**Surface Rubber Build Up**  
 Magnification: 120 X



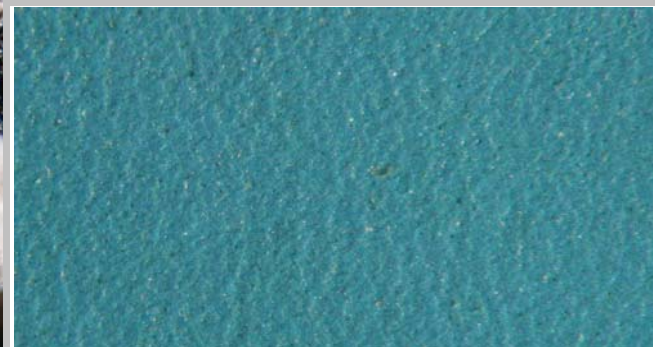
**Compressive Layer Build Up**  
 Magnification: 120 X

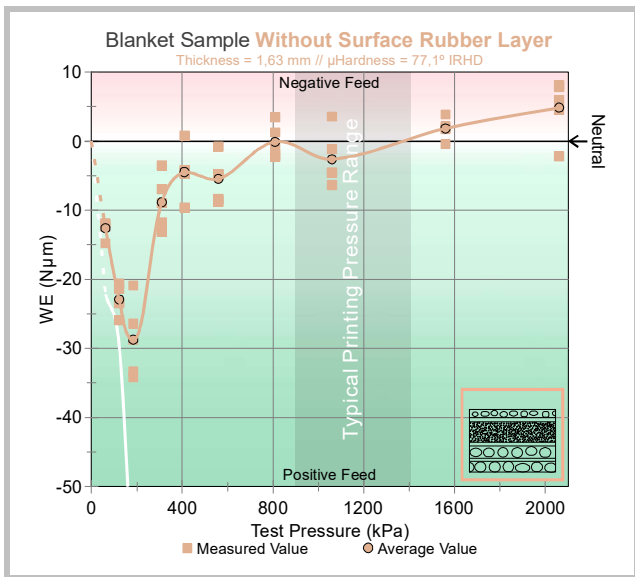
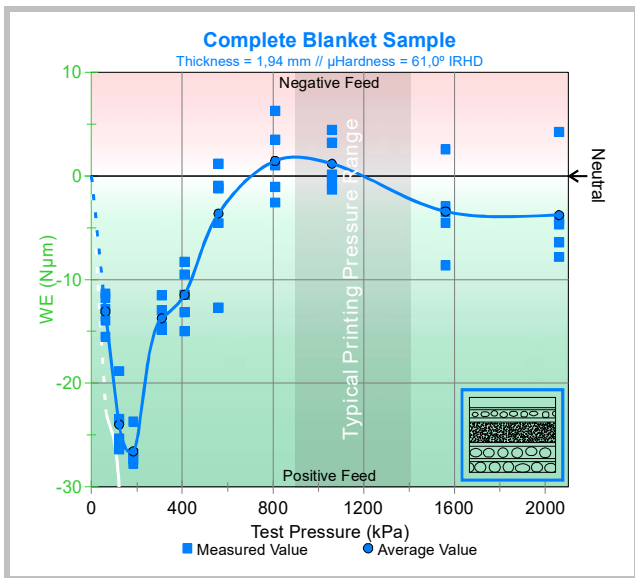


**Blanket Design**  
 Magnification: 45 X

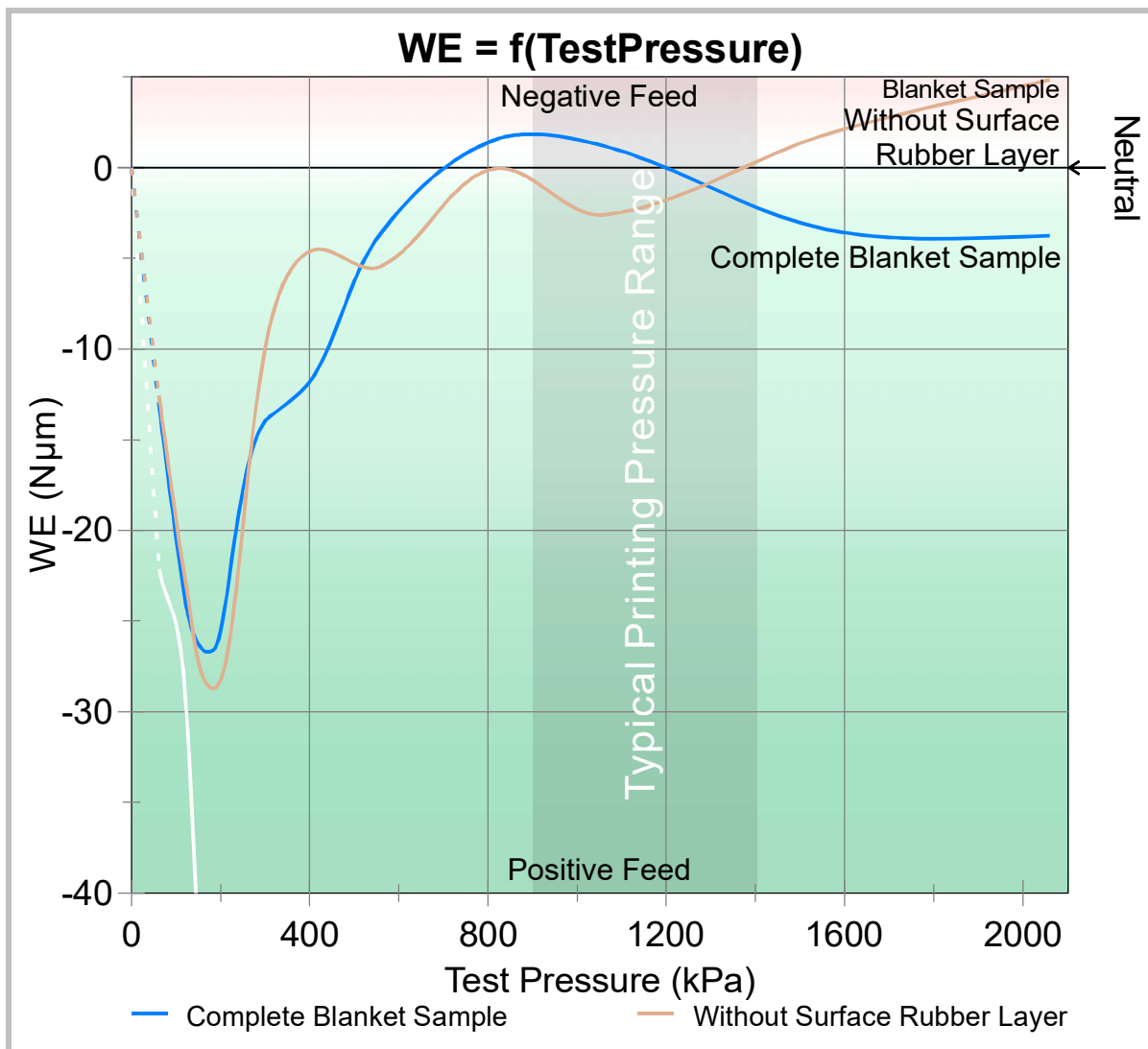


**Surface Rubber Homogeneity - 1,0 x 1,9 mm**  
 Magnification: 75 X





Surface Rubber Layer Influence on Blanket Response to Pressure





Iberográfica

Capa Rota - Portugal

# Blanket Response to Pressure Whip Energy @ Printing Nip

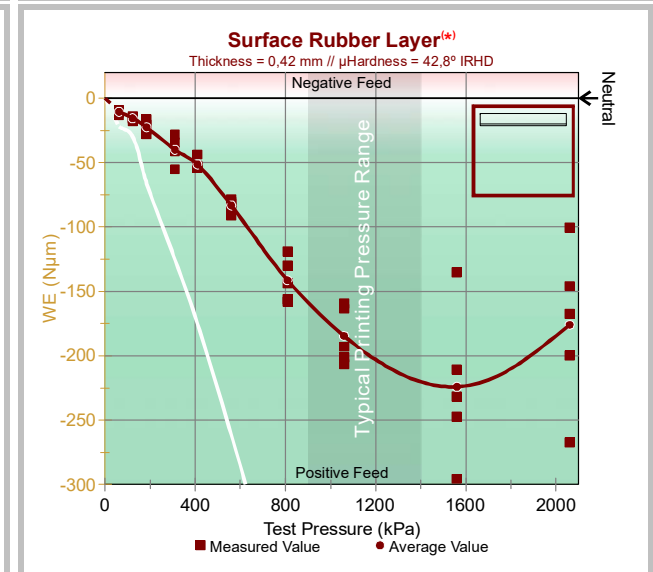
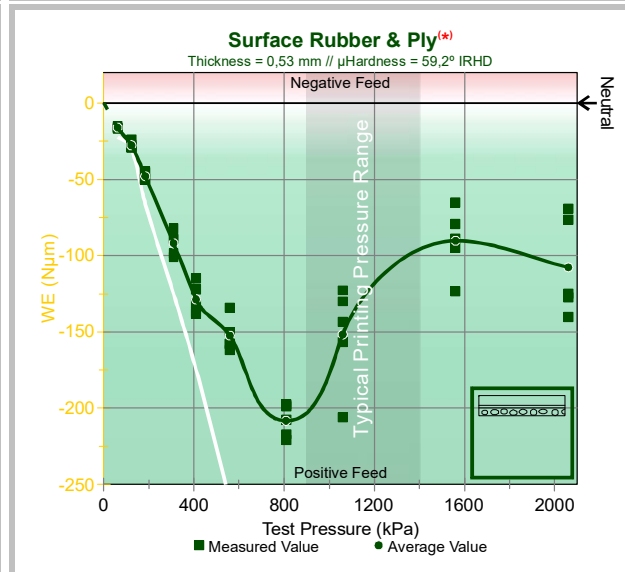
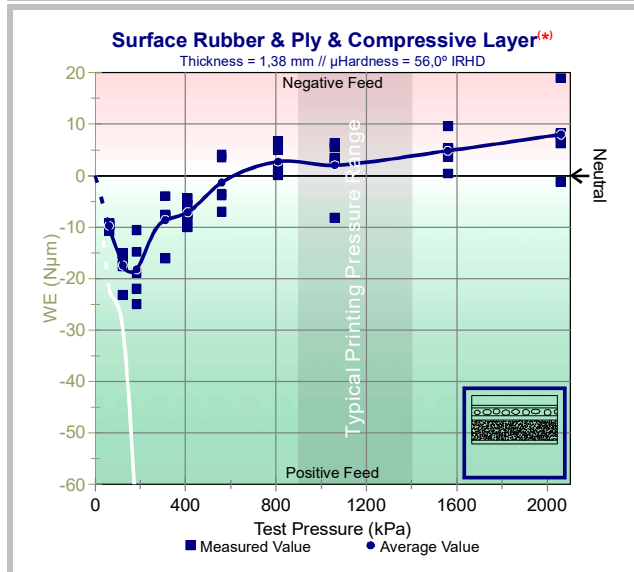
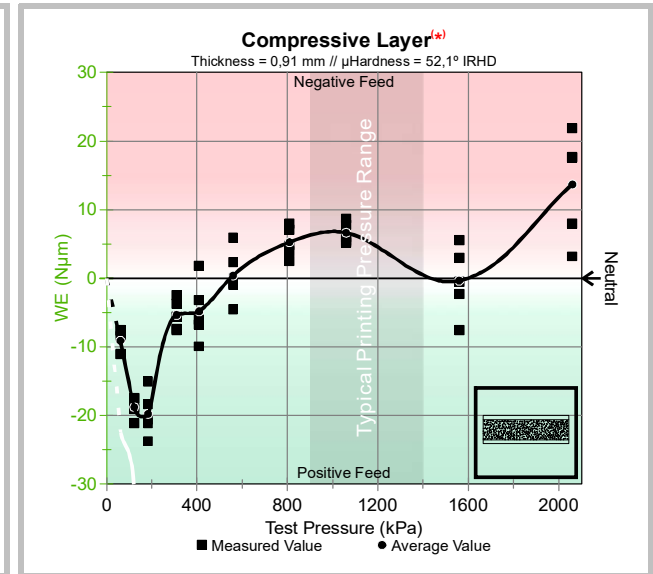
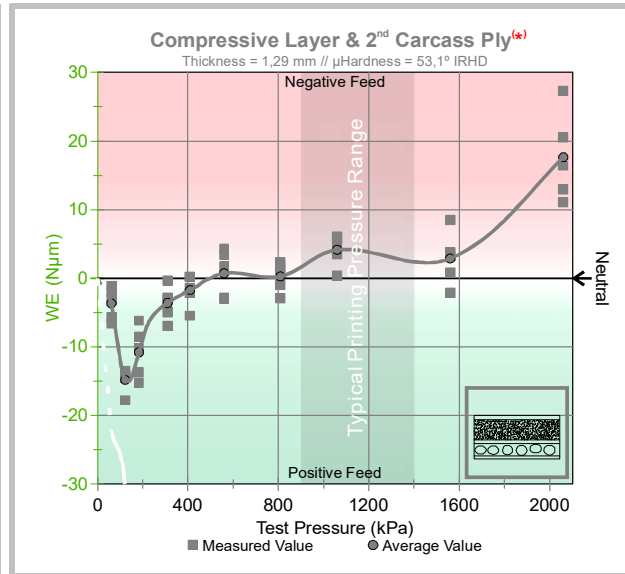
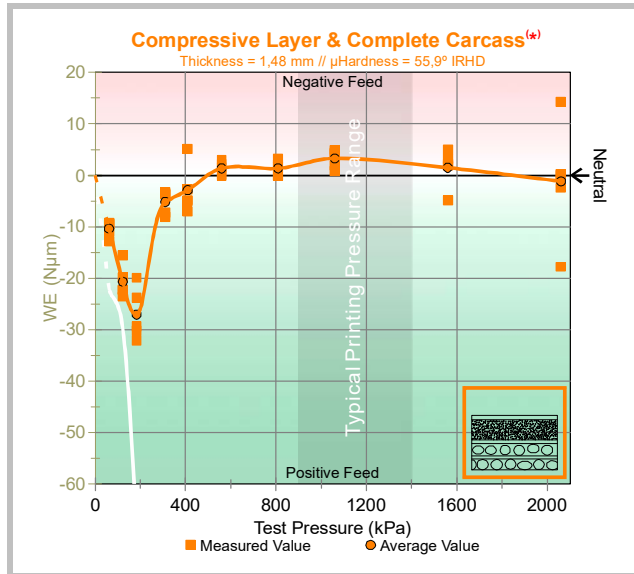
# Brand U / I Layers

Doc.: Laboratory Study - 061

Date: 07 - 08 - 2017

Page: 3 of 4

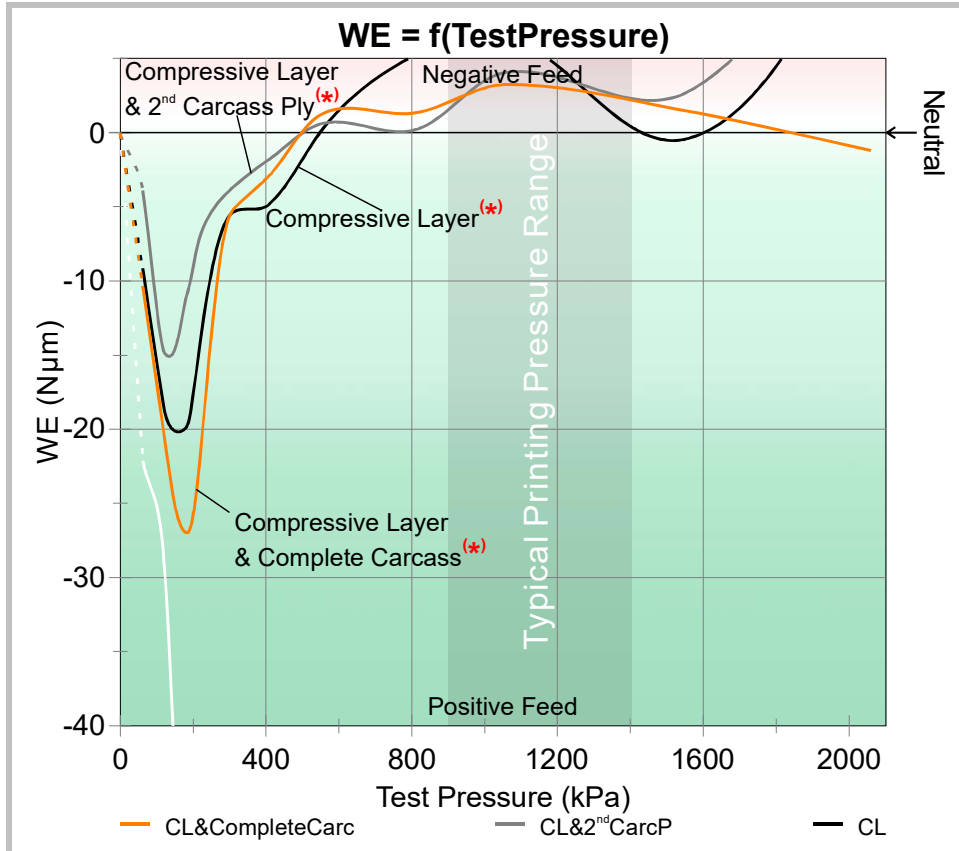
Rev.: 1



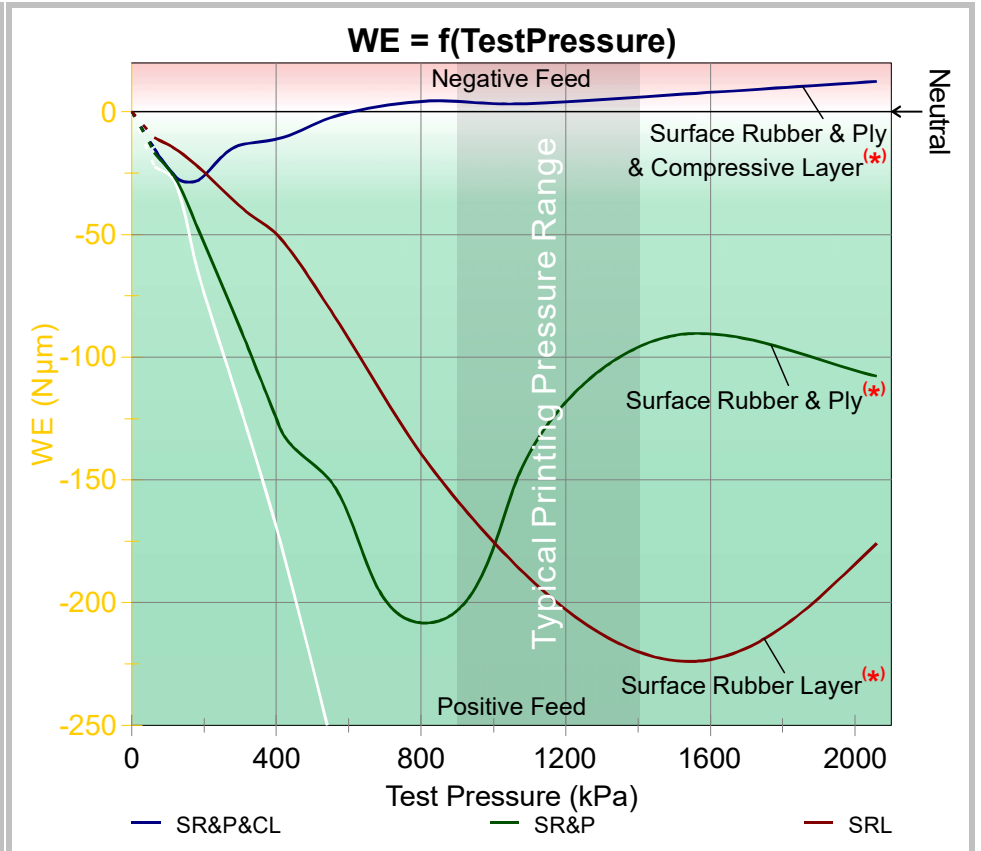
(\*) - Plus adjacent glue(s).



Carcass Influence on Compressive Layer Response



Compressive Ply & Layer Influence on Surface Rubber Response



- CL&CompleteCarc: Blanket Compressive Layer & Complete Carcass
- CL&Carc2<sup>nd</sup>P: Blanket Compressive Layer & 2<sup>nd</sup> Carcass Ply
- CL: Blanket Compressive Layer

- SR&P&CL: Blanket Surface Rubber & Ply & Compressive Layer
- SR&P: Blanket Surface Rubber & Ply
- SRL: Blanket Surface Rubber Layer

NOTE: All samples were collected from the same roll piece of batch #AP0486e.

(\*) - Plus adjacent glue(s).